

**International Mobilities  
in the Erasmus Programme  
(2021 – 2027)**

- The new ERASMUS+ Programme (2021-2027)
- ERASMUS for Higher Education
  - Priorities
  - Structure
  - Novelties
  - Aims
- International Mobility within KA131 projects
- AOB

# ERASMUS+ 2021-2027

Erasmus+ is the EU Programme in the fields of **education, training, youth and sport**. And these are considered key areas that support citizens in their **personal and professional development**

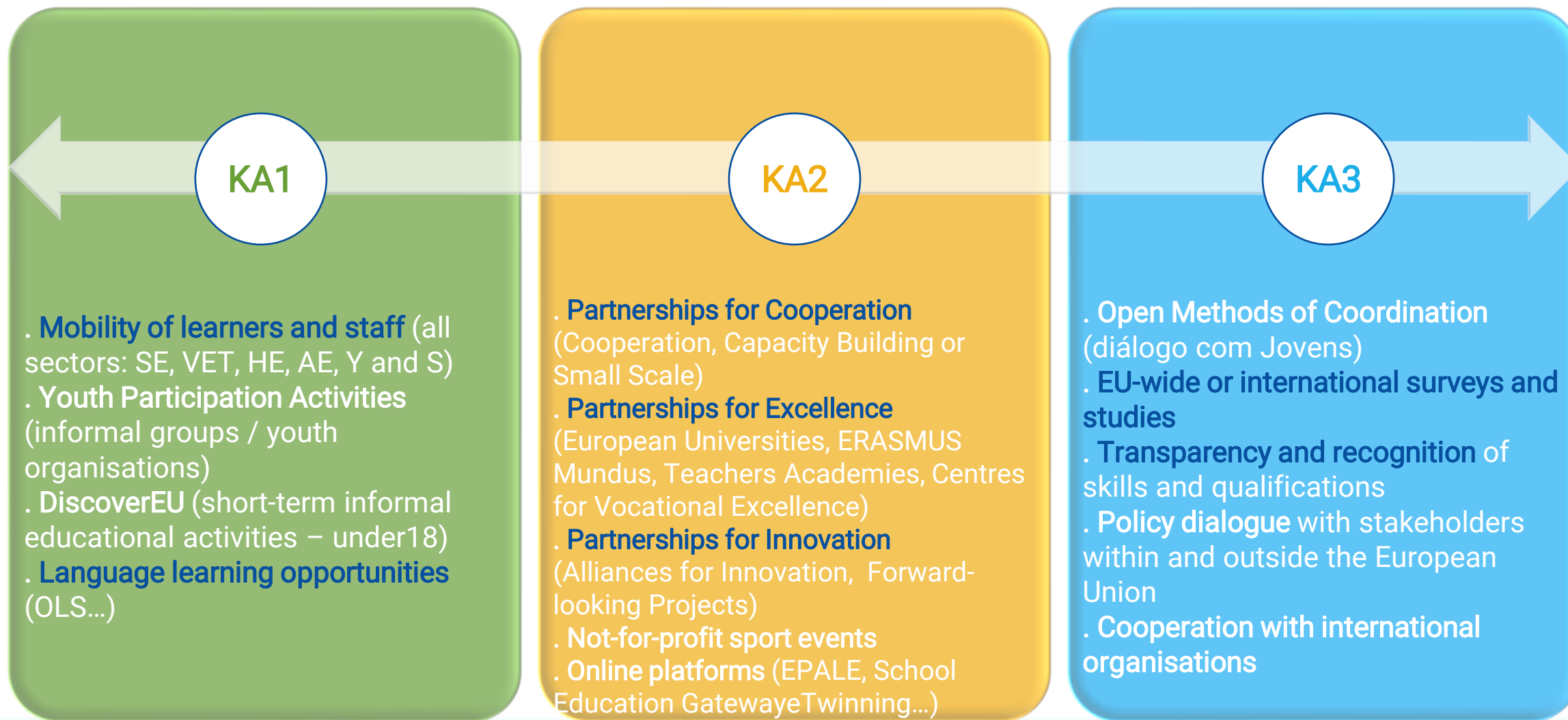
## HOW?

Supporting and facilitating the transnational and international **cooperation between organisations... blended mobility... digital tools... virtual learning... inclusive opportunities... sustainable activities and green travel**

## WHY?

It facilitates the **circulation of ideas, the transmission of best practices and expertise and the development of digital capabilities** thus contributing to a high-quality education while strengthening **social cohesion**.

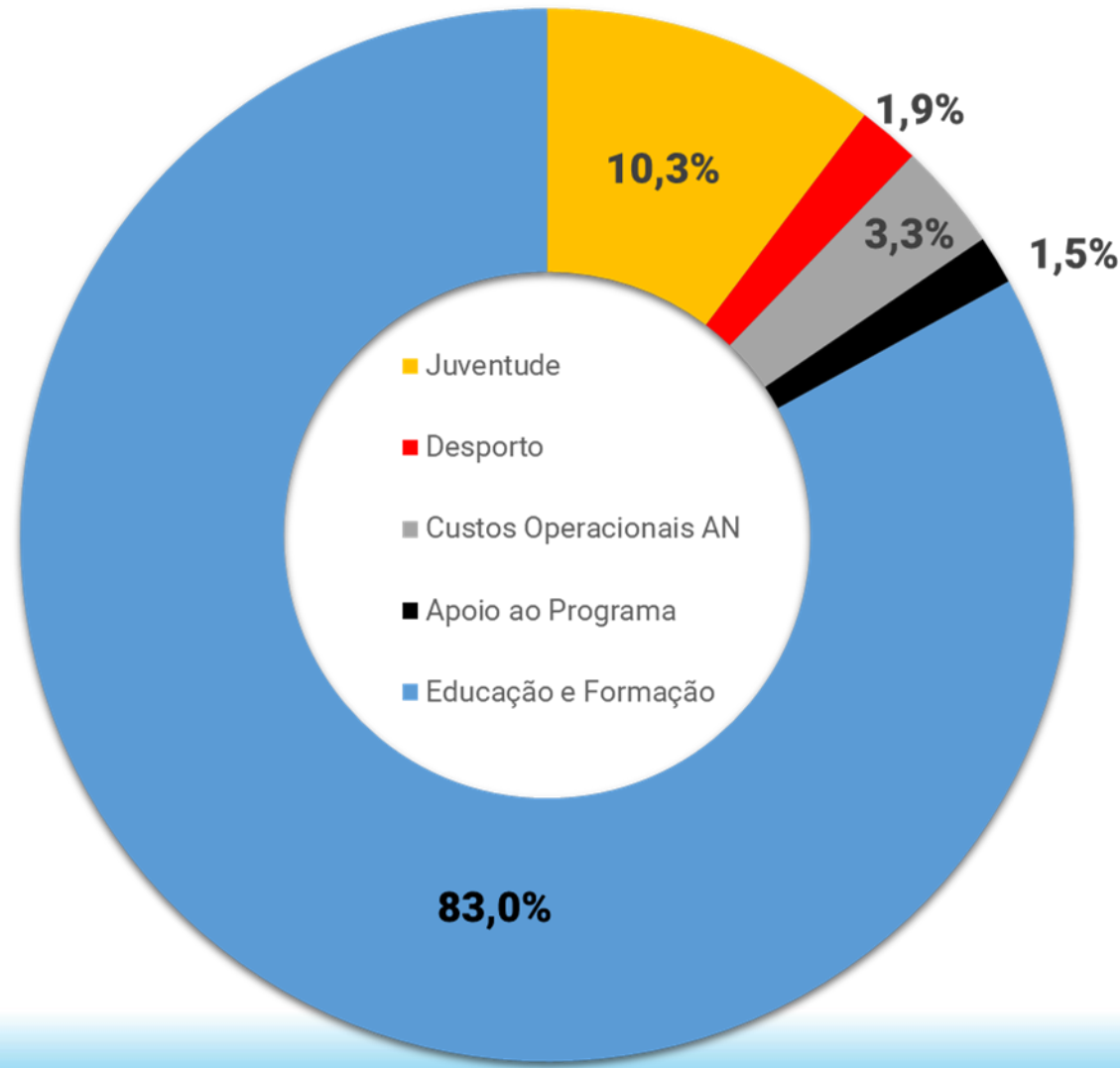
## *Evolution, not revolution*



## Jean Monnet Actions

Zoom | Live Event

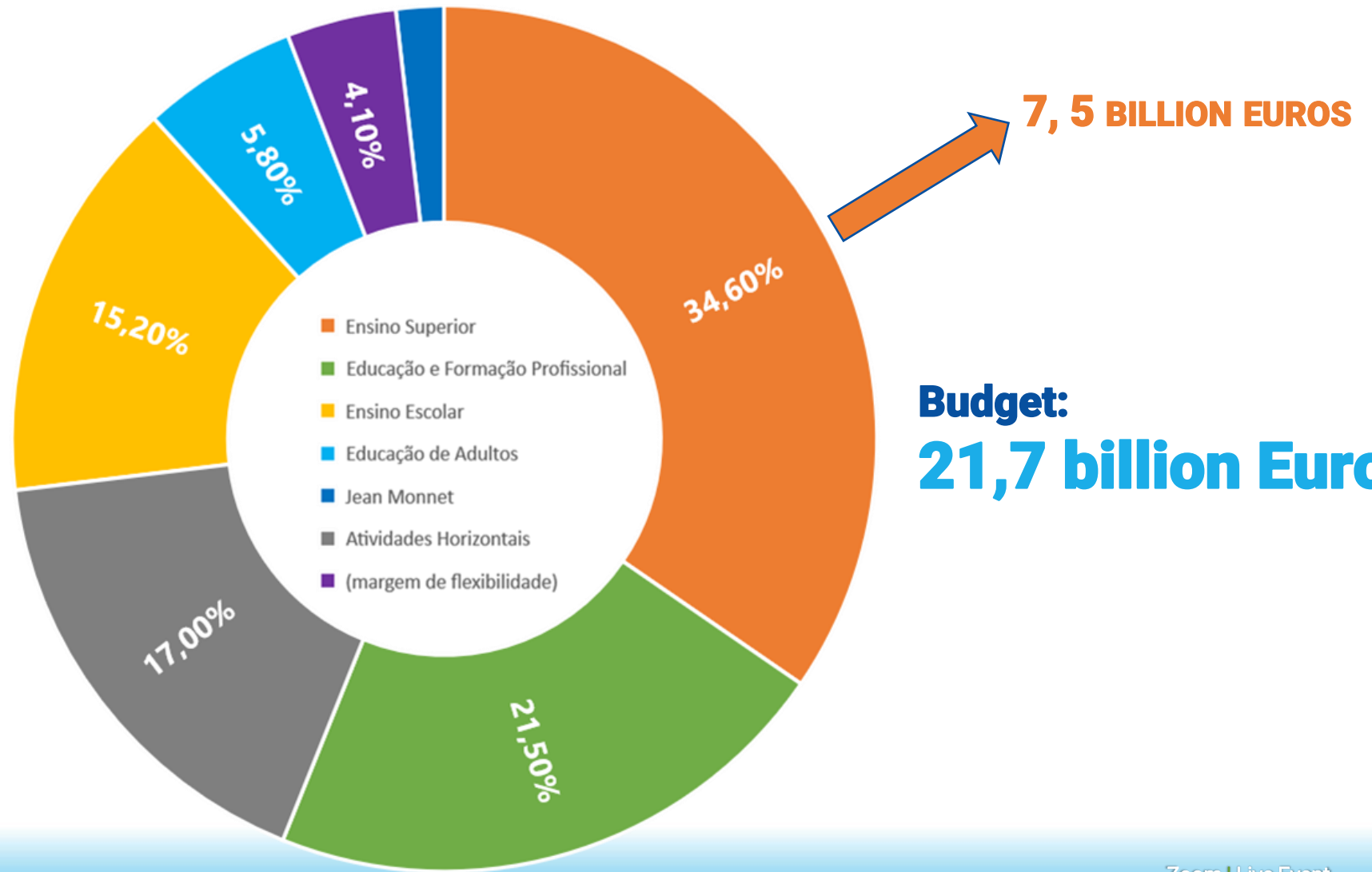
## Sectors 2021 - 2027 Budget distribution



**Budget:**  
**26,2 billion Euros**



## Education & Training 2021 - 2027 Field distribution



**Budget:**  
**21,7 billion Euros**

## PRIORITIES

**Inclusion** and  
Diversity



**Digital**  
Transformation



**Environment** and fight  
against climate change



**Participation** in  
democratic life



## Inclusion and Diversity

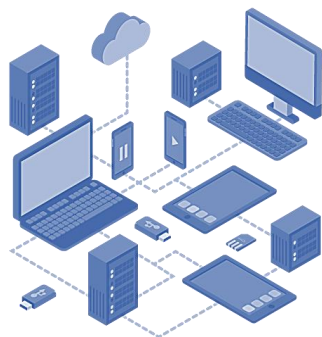


- More mobility formats, more flexible
- Higher grants and special support / top-ups for people with fewer opportunities;
- Enhance inclusive and innovative forms of teaching and learning (KA2);
- All students from all cycles and study areas.

(physical, mental, intellectual or sensory impairments; health problems; students with children; student workers; professional athletes; students from underrepresented study areas; social and economic disadvantages; cultural and ethnic minorities; geographic isolation or periphery)



## Digital Transformation



- Support to **blended** mobility;
- ERASMUS **without Paper** (ESI; ESC; OLA; E+App; IIA;ToR)
- Harness the potential of **technologies for teaching and learning** to enhance **digital skills** and competence development in students and staff;
- High-performing digital education ecosystem, by **building capacity** and critical understanding in HEI
- **High-quality digital contents**, accessible distant learning methodologies and **forward-looking projects (KA2)**

(climate change; clean and renewable energies; artificial intelligence; robotics; data analysis; arts / design...)

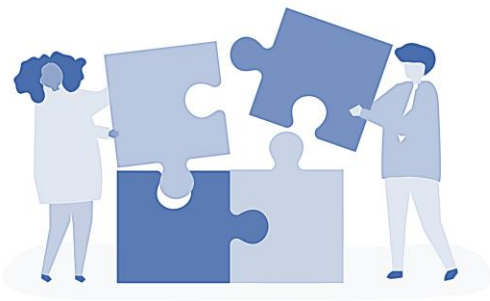
## Environment and fight against climate change



- Climate change and sustainability as a **policy priority in all actions**;
- Incorporate **green practices in all projects** through an environmental-friendly approach when designing the activities (new ECHE);
- Erasmus+ Mobile App to **raise awareness among participants**
- **Enable changes** for individual preferences, cultural values and awareness for sustainable development, **consumption habits and lifestyles (KA2)**;

(dematerialization; energy and resource savings; waste reduction; less emissions / carbon footprint; food and sustainable mobility destinations; green travel...)

## Participation in democratic life



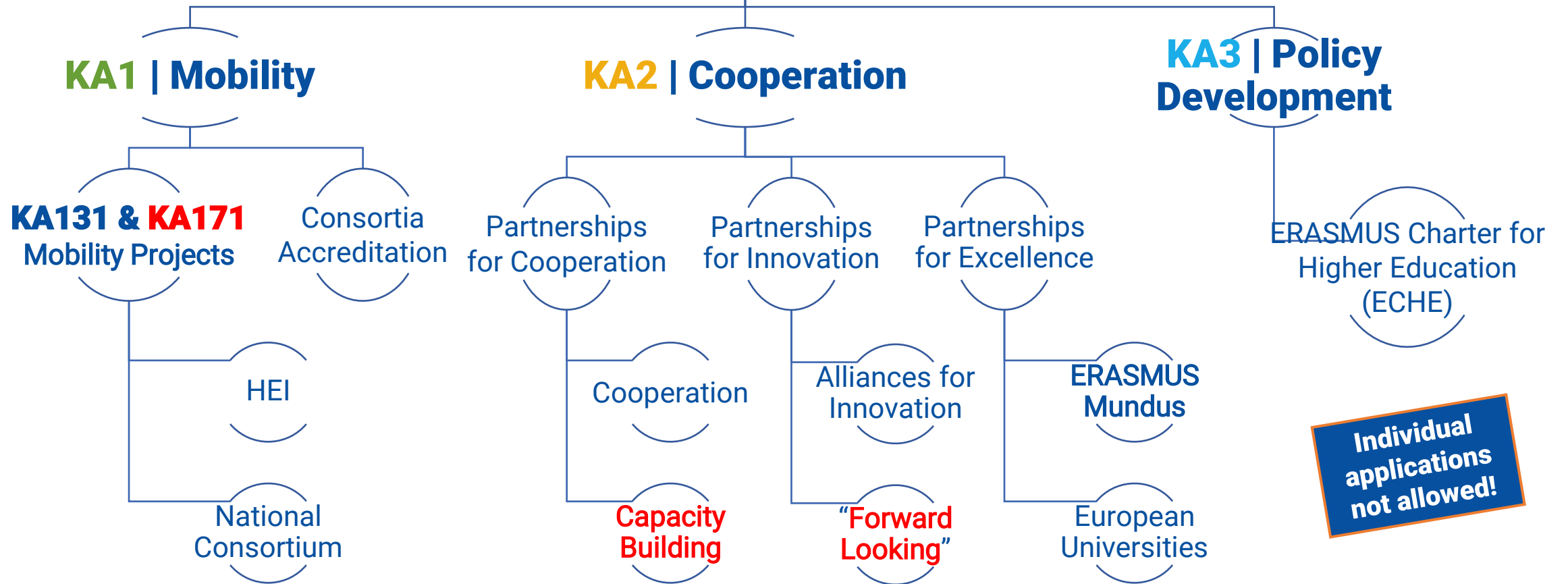
- Strengthening citizens' understanding of the European Union from an early age, notably regarding **common EU values**, the principles of **unity and diversity** and their **social, cultural and historical heritage**
- Priority to projects that offer opportunities for people's **participation in democratic life**, social and civic engagement (KA2);
- Enhance the citizens' **sense of belonging to the European Union**.

(democracy, human rights; ethics; social and inter-cultural competences' development; critical thinking; digital literacy; active citizenship; lifelong learning...)

# Higher Education Priorities



## Higher Education



**Individual applications not allowed!**



## Mobility

# Higher Education

## Novelties

- ✓ **New Charter** for Higher Education
- ✓ Flexible mobility formats:
  - ✓ **Blended mobility**
  - ✓ **Blended intensive programmes**
  - ✓ More opportunities for **doctoral mobility**
- ✓ **International outgoing mobility**
- ✓ **Digital skills** training for staff
- ✓ **European Student Card Initiative / EWP**
- ✓ Revised **grant levels**
- ✓ **Top-ups** for inclusion and green travel
- ✓ Renewed **OLS**

# Mobility Higher Education Objectives

**STUDENTS &  
RECENT  
GRADUATES**

**STAFF**

allow different **views, knowledge**, teaching and research methods as well as **work practices**

acquire **language, inter-cultural and transversal skills** (problem solving, critical thinking and creativity)

develop **digital and forward-looking skills**, that will enable them to tackle the challenges of today and tomorrow

facilitate **personal development**, the **ability to adapt** to new situations and **self-confidence**.

share their **expertise** and experience **new teaching environments**

acquire new innovative **pedagogical and curriculum design skills** and **digital skills**

connect with their peers abroad to develop **common activities** and **exchange good practices**

**enhance cooperation** between higher education institutions and better **prepare students** for the world of work

# Higher Education

## KA1 | LEARNING MOBILITY OF INDIVIDUALS

Individual applications not allowed!

**KA130**  
ERASMUS ACCREDITATION FOR MOBILITY CONSORTIA

**KA131**  
MOBILITY FOR HIGHER EDUCATION STUDENTS AND STAFF

~~**KA171**  
International Credit Mobility~~ → 2022!

## KA131

### INTERNATIONAL

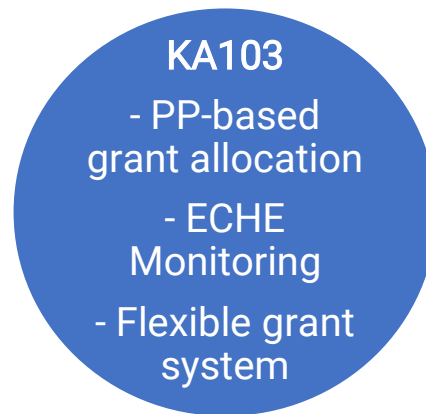
### MOBILITY FOR HIGHER EDUCATION STUDENTS AND STAFF

## QUALITY ASSURANCE | FRAMEWORK

- ERASMUS Charter for Higher Education (**quality standards**);
- ECHE Guidelines (explanation of **ECHE principles**);
- **EPS** (HEI internationalisation strategy and use of different actions of E+)
- **Mobility Consortium Accreditation** (how will international mobility be organised as a group);
- **Grant allocation policy** (based on PP and on the KA131 application);
- **ICM Handbook & HE Mobility Handbook**;
- **Monitoring tools** (ECHE Monitoring Guide; Checks; Visits), **Programme system tools** (Beneficiary Module; Results Platform) and **Reports** (intermediary and final);
- **International IIA** (compulsory for SMS / STA; Optional for SMP / STT).

# KA131

## INTERNATIONAL MOBILITY FOR HIGHER EDUCATION STUDENTS AND STAFF



benefits





## QUALITY ASSURANCE | PROJECT ACTIVITIES

### KA131

### INTERNATIONAL

### MOBILITY FOR HIGHER EDUCATION STUDENTS AND STAFF

- Single duration of **26 months** to accommodate international mobility for **2 full academic years**;
- Full and partial **“0” grants are allowed** (recommendation: 5 months for SMS and 4 months for SMP);
- Participants with **fewer opportunities shall receive full grant** / duration
- HEI must select potential participants and award grants in a **fair, transparent, coherent and documented** way;
- Partner Country HEI are not eligible to sign the ECHE, but they **must respect the ECHE principles** (IIA);
- **language support, recognition** of learning outcomes and **support to participants** must be in the IIA (if between 2 HEI);
- **'Learning Agreement'** or **'Mobility Agreement'** to be signed by all 3 parties, before the activity takes place;
- Mobilities to be encoded in **Beneficiary Module** (ex-MobilityTool+).

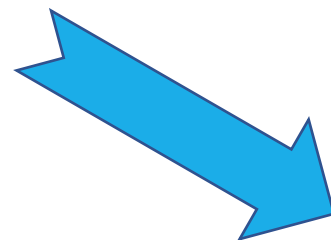
# KA131

## INTERNATIONAL

### MOBILITY FOR HIGHER EDUCATION STUDENTS AND STAFF



Same  
options!



**1 HEI (ECHE)**



- Student Mobility for **Studies** (SMS)
- Student Mobility for **Traineeships** (SMP)
- Staff Mobility for **Teaching** (STA)
- Staff Mobility for **Training** (STT)
- Blended **Intensive Programmes** (BIP)

**X Consortium** (Accreditation KA130)



## KA131

### INTERNATIONAL

#### MOBILITY FOR HIGHER EDUCATION STUDENTS AND STAFF

## Student Mobility

- Students from **any study fields and cycle** (short cycle, bachelor, master and doctoral levels) and recent graduates (SMP only)
- Possible to **any Partner Country** and must be **compatible with the student's degree** related learning and personal development needs;
- **SMS** or **SMP** **can be** combined and / or **blended** (physical mobility with a virtual component, facilitating collaborative online learning exchange and teamwork – courses, online training, work assignments);
- **SMS**: receiving Partner Country organisations must be **HEIs recognised by competent authorities and having signed an IIA** with their Programme Country partners, before the mobility takes place;
- **SMP**: **public or private organisation active in the labour market** or in the fields of education, training, youth, research and innovation in a Partner Country (**also recognised HEI**) can be a receiving organisation.

## KA131

### INTERNATIONAL

#### MOBILITY FOR HIGHER EDUCATION STUDENTS AND STAFF

## Staff Mobility

- Any staff from a HEI (outgoing) or invited staff from an enterprise (incoming) to teach or train students / staff at a HEI
- Possible to any Partner Country and must be related to the staff's professional development by addressing their learning and personal development needs;
- A teaching period –STA- or a training period –STT- (training events or job shadowing) abroad, relevant to their day-to-day work;
- STA: Receiving Partner Country organisations must be HEIs recognised by competent authorities and having signed an IIA with their Programme Country partners before the mobility takes place;
- STT: public or private organisation active in the labour market or in the fields of education, training, youth, research and innovation in a Partner Country (also recognised HEI) can be a receiving organisation

## KA131

### INTERNATIONAL

#### **MOBILITY FOR HIGHER EDUCATION STUDENTS AND STAFF**

## Blended Intensive Programmes

- Must be organized in a Programme Country;
- Allow HEI to develop jointly blended mobility curricula and activities;
- HEIs from Partner Countries may participate and send participants at their own costs;
- The participants from Partner Countries do not count towards the minimum of 15 participants.



## KA131

### INTERNATIONAL

#### MOBILITY FOR HIGHER EDUCATION STUDENTS AND STAFF

accessible to  
students  
from all  
backgrounds!

## POSSIBLE DURATIONS FOR PHYSICAL MOBILITIES

- 1 day to 2 months (staff from enterprises STA) - **INCOMING**
- 8 hours / 5 days to 2 months (STA int. & STT int.)
- 5 to 30 days (SMS 3rd cycle & SMP 3rd cycle)
- 5 to 30 days + Virtual (BIP & SMS / SMP fewer opportunities)
- 2 to 12 months (SMS, 1/2/3rd cycles & SMP, 1/2/3rd cycles)

There is no minimum nor maximum duration for the virtual component, in case of blended mobilities

FUNDING | STUDENTS

Grant rates aligned with those of KA107 / ICM except for regions 5 and 14!

KA131

INTERNATIONAL

MOBILITY FOR HIGHER EDUCATION STUDENTS AND STAFF

<p><b>Group 1</b> Countries with higher living costs</p>	<p>Denmark, Finland, Iceland, Ireland, Liechtenstein, Luxembourg, Norway, Sweden</p> <p>Faroe Islands, Switzerland and United Kingdom (Region 14)</p>	<p>310€ to 600€ / month</p>
<p><b>Group 2</b> Countries with medium living costs</p>	<p>Austria, Belgium, Cyprus, France, Germany, Greece, Italy, Malta, Netherlands, Portugal, Spain.</p> <p>Andorra, Monaco, San Marino, Vatican City State (Region 5)</p>	<p>260€ to 540€ / month</p>
<p><b>Group 3</b> Countries with lower living costs</p>	<p>Bulgaria, Croatia, Czech Republic, Estonia, Hungary, Latvia, Lithuania, Poland, Romania, Serbia, Slovakia, Slovenia, North Macedonia, Turkey.</p>	<p>200€ to 490€ / month</p>

FUNDING | STUDENTS II

KA131

INTERNATIONAL

MOBILITY FOR HIGHER EDUCATION STUDENTS AND STAFF

FROM	TO	AMOUNT
Programme Countries (Outermost and Overseas)	Programme Countries and Partner Countries (Regions 5 and 14)	Travel + 700€ / month
Programme Countries (all territories)	Partner Countries (Regions 1-4 and 6-13)	Travel + 700€ / month
Programme Countries	Partner Countries (Regions 5 and 14)	Groups 1 and 2

FROM	TO	AMOUNT
Programme Countries (short-term, 5-30 days)	Any Programme or Partner Country	70€ / day (1 <sup>st</sup> -14 <sup>th</sup> ) and 50€ / day (15 <sup>th</sup> -30 <sup>th</sup> )
Students & Recent Graduates - Fewer Opportunities Receive a top-up amount of 100€ (5-14 days) or 150€ (15-30 days) € for a physical mobility		

Students & Recent Graduates - Fewer Opportunities (Top-Up)	250€ / month
Students & Recent Graduates – Green Travel	50€

FUNDING | STAFF

KA131

INTERNATIONAL

MOBILITY FOR HIGHER EDUCATION STUDENTS AND STAFF

		1 <sup>st</sup> -14 <sup>th</sup> day (100%)	15 <sup>th</sup> -60 <sup>th</sup> day (70%)
<b>Group 1</b> Countries with higher living costs	Denmark, Finland, Iceland, Ireland, Liechtenstein, Luxembourg, Norway, Sweden  Faroe Islands, Switzerland and United Kingdom (Region 14)	Travel + 80€ to 180€ / day	Travel + 70% / day
<b>Group 2</b> Countries with medium living costs	Austria, Belgium, Cyprus, France, Germany, Greece, Italy, Malta, Netherlands, Portugal, Spain.  Andorra, Monaco, San Marino, Vatican City State (Region 5)	Travel + 70€ to 160€ / day	Travel + 70% / day
<b>Group 3</b> Countries with lower living costs	Bulgaria, Croatia, Czech Republic, Estonia, Hungary, Latvia, Lithuania, Poland, Romania, Serbia, Slovakia, Slovenia, North Macedonia, Turkey.	Travel + 60€ to 140€ / day	Travel + 70% / day
Partner Countries from Regions 1-4 and 6-13		Travel + 180€ / day	Travel + 126€ / day

Zoom | Live Event

# KA131

## INTERNATIONAL

### MOBILITY FOR HIGHER EDUCATION STUDENTS AND STAFF

## FUNDING | Travel and other costs...

Promote environmentally friendly practices by using **sustainable means of transport** for mobility (**reduce the carbon and environmental footprints**)!

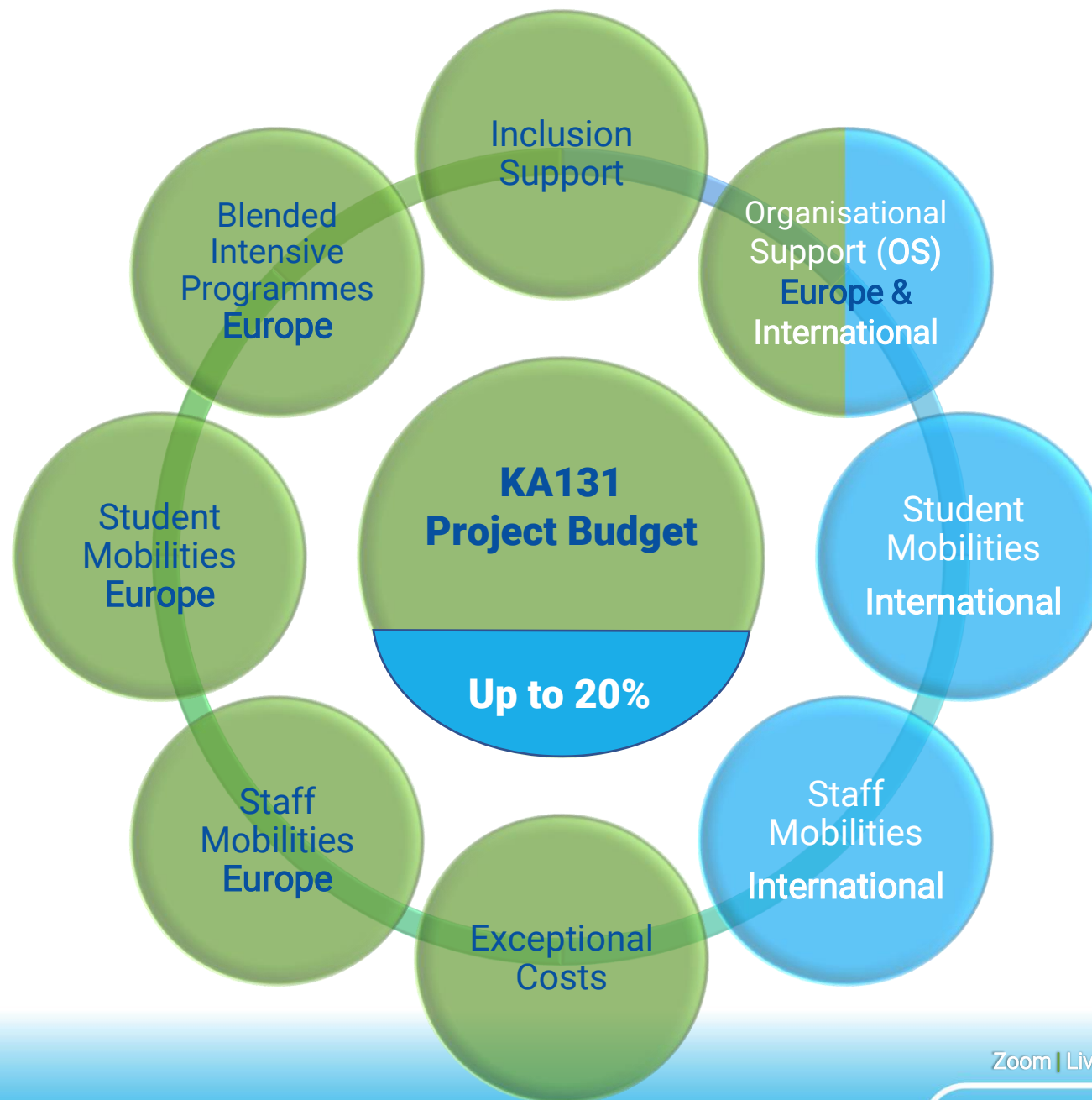
TRAVEL DISTANCES	STANDARD TRAVEL	GREEN TRAVEL
Between 0 / 10 and 99 KM	23€ per participant	
Between 100 and 499 KM	180€ per participant	210€ per participant
Between 500 and 1999 KM	275€ per participant	320€ per participant
Between 2000 and 2999 KM	360€ per participant	410€ per participant
Between 3000 and 3999 KM	530€ per participant	610€ per participant
Between 4000 and 7999 KM	820€ per participant	
8000 KM or more	1500€ per participant	

- **Organisational Support** (HEI): 400€ / mobility (up to 100th) and 230€ / mobility (from 101st)
- **Inclusion Support** (HEI): 100€ / mobility
- **Inclusion Support** (Participant): Real Costs
- **Exceptional Costs**: Real Costs / 80% of eligible costs (Financial Guarantee or Expensive Travel)

Zoom | Live Event



**KA131**  
INTERNATIONAL  
**MOBILITY FOR HIGHER  
EDUCATION STUDENTS  
AND STAFF**



Zoom | Live Event

## KA131 INTERNATIONAL

- All ECHE holders by default will have the possibility of engaging in international mobility – it is **not competitive!**
- Before any study and teaching mobility, HEIs have to sign **inter-institutional agreements according to the Erasmus Charter for Higher Education (ECHE)** – new model available!
- In the KA131 application form, the applicant is requested to provide an **estimated share** of international mobility activities (up to 20%) but **will not constitute a target / limitation nor will it be used in the grant award** (it will allow EC and NA to know the general level of interest);
- **Up to 20% of a KA131 Project's budget** (OS + Mobility Grants only) – For consortia, some partners may surpass 20% of their share, if the limit of 20% is respected for project's total budget;
- **Only outgoing activities** can be supported in 2021 Projects (**exception: STA for specialists**)

## KA131 INTERNATIONAL

- **Main aims:**
  - to have an international experience and **acquire relevant forward-looking competences, skills and knowledge** worldwide (...) gaining global perspectives and insights to **enable individuals and organisations to address global challenges;**
  - enable HEI from Programme Countries to **establish long-term sustainable international cooperation** with HEI from Partner Countries;
- KA131 International **will not replace ICM** since their purposes are not the same (see table). **KA131 aims to strengthening the EU's role as a global player** with 'High-quality international cooperation in education and training', 'essential for the achievement of the EU's geopolitical priorities;
- expected to **cover the widest possible geographic scope** (all countries worldwide / Regions 1-14) – **HEI are encouraged to diversify** their "Partner Countries"
- However, **it is all about your internationalisation institutional strategy!** (EPS)

THANK YOU!

[gustavo.alva-rosa@erasmusmais.pt](mailto:gustavo.alva-rosa@erasmusmais.pt)

[www.erasmusmais.pt](http://www.erasmusmais.pt) | [www.erasmusmais.eu](http://www.erasmusmais.eu)

Praça de Alvalade, 11 1700 Lisboa | Portugal  
T: +351 210 101 900 | F: +351 210 101 910